

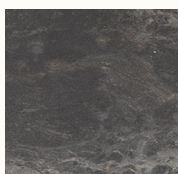
# Terra Pendant

Post-consumer e-waste mixed  
with coffee shell waste

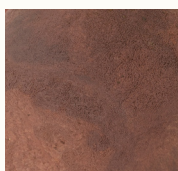
The minimalist design of the Terra Collection was conceived by OEO Studio, a well-established design partner of Mater. The collection is our first lighting series made of Matek™ and its design is a direct result of the possibilities offered by Matek™. The production method enables the seamless integration of joints and technical elements within the lamps. The design is minimalist, precise, and timeless, while the tactility of the Matek™ material lends the series a fresh and intriguing expression.



Coffee Waste Light



Coffee Waste Black



Coffee Waste  
Rust Red



**Designed by**  
OEO Studio

**Item no.**  
02540 Terra Pendant Coffee Waste  
Black / Black wire  
02541 Terra Pendant Coffee Waste  
Light / Black wire  
02542 Terra Pendant Coffee Waste  
Rust Red / Black wire

**Country of origin**  
Denmark

**Materials**  
Matek™  
Black plastic wire

**Socket**  
GX53  
Max 10W LED  
Voltage: 230V 50/60Hz

**Light Source**  
Light source sold separately  
Item no 02560  
  
Dimmable if connected to a dimmer switch  
Canopy not included

**Certifications**

IP20 CE  

**Dimensions**  
Ø 17.5 cm H 11 cm / Ø 6.9" H 4.3"

**Wire length**  
3.2 m / 126"

**Weight**  
0.5 kg / 1.1 lbs

**Packaging** 1 box / 1 pcs.

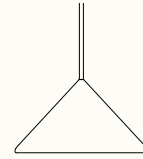
**Maintenance**  
Please follow our material  
cleaning and care guide [here](#)

**Environment**  
Indoor

**mater**

# Mater Sustainability Factsheet

Terra Pendant



## Made of

Matek™

### Item no. 02540

Terra Pendant Coffee Waste  
Black - Black plastic wire

### CO<sub>2</sub> Footprint

7 kg CO<sub>2</sub>e

**= 219g  
of waste materials**

### Item no. 02541

Terra Pendant Coffee Waste  
Light - Black plastic wire

### CO<sub>2</sub> Footprint

7 kg CO<sub>2</sub>e

**= 206g  
of waste materials**

### Item no. 02542

Terra Pendant Coffee Waste  
Rust Red - Black plastic wire

### CO<sub>2</sub> Footprint

7 kg CO<sub>2</sub>e

**= 219g  
of waste materials**

\*calculated using Målbar Software V. 2.9608 on the 19.12.24

# Mater Sustainability Factsheet

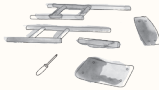
## Matek™



### Matek®

In alliance with large corporations, Mater explores new technology that recycles industrial fibre and plastic waste. This results in five new unique patented materials under the name Matek®.

Read more about Matek [here](#)



### Repair for long lasting

Good products, are made to be used. To give the products the longest possible life, we want to make it easy for you to repair them yourself.

Contact our customer service for more info [here](#)

### Green energy

This product is produced in a production facility that is 100% powered by hydropower – a renewable energy resource.



### CO<sub>2</sub> Footprint

At Mater, we believe in the importance of transparency. By doing Life Cycle Assessments (LCA) on our furniture, we can analyse the total climate emission for each of our product's lifespan.