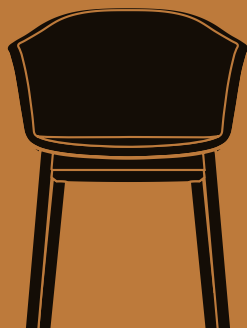
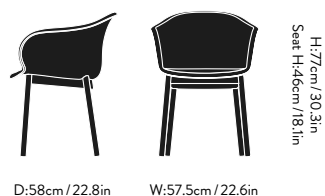


Elefy ^{JH30 & JH31}
by Jaime Hayon
2019





Elefy^{JH30 & JH31} by Jaime Hayon 2019

Product category

Chair

Environment

Indoor

Material

Polypropylene, HR foam, lacquered wood legs in oak, plastic shell, fabric or leather upholstery.

Production process

The shell is made from moulded polypropylene, with the option of upholstery. The wooden base is made from solid wood and formpressed veneer.

Base finishes

Black lacquered oak or lacquered oak.

Gliders

Plastic gliders installed as standard. Felt gliders are available upon request.

Shell finishes

JH30: Black, White, Soft Beige, Midnight Blue, Copper Brown.

JH31: Available in fabric, Leather and COM.

Upholstery

Fabric usage: 1.7 meters based on 140cm roll.

Leather usage: 3 square meters.

COM must be approved by &Tradition to ensure suitability for upholstery.

Dimensions

W: 57.5cm / 22.6in, D: 58cm / 22.8in,
H: 77cm / 30.3in, Seat H: 46cm / 18.1in.

Packaging dimensions

H: 83cm / 30.7in, W: 59cm / 21.9in,
D: 59cm / 21.9in.

Colli quantity

1

Weight

JH30: Product: 7.8 kg / Incl. packaging: 11.1 kg

JH31: Product: 8,9 kg / Incl. packaging: 12.2 kg

Strength, durability and safety testing

The chair is tested for strength, durability and safety according to EN 16139 Level 2 - Extreme use.

Cleaning instructions

Please download our Material Care & Cleaning instructions through www.andtradition.com

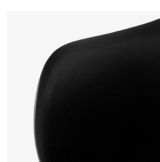
Related products



JH28 & JH29

JH32 - JH35

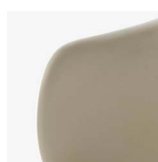
JH36 & JH37



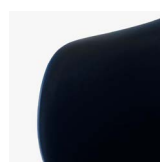
Black



White



Soft Beige



Midnight Blue



Copper Brown



Lacquered oak



Black lacquered oak

&Tradition[®]